

# Integrated multifunction vision ADAS



Front collision, lane departure  
& pedestrian detection warning system



CHIMEI MOTOR ELECTRONICS CO., LTD.  
www.chimei-motor.com



## Specification

Product Size	86×122×45mm
Import Voltage	DC8V ~36V
Import Current	<1A
Operating Temperature	-40~105°C
Sensor Format	CMOS
Resolution	720p
Lens Formate	1/3"+5G
Dynamic Rang	115dB
Camera FOV	D53° ×H42° ×V32°

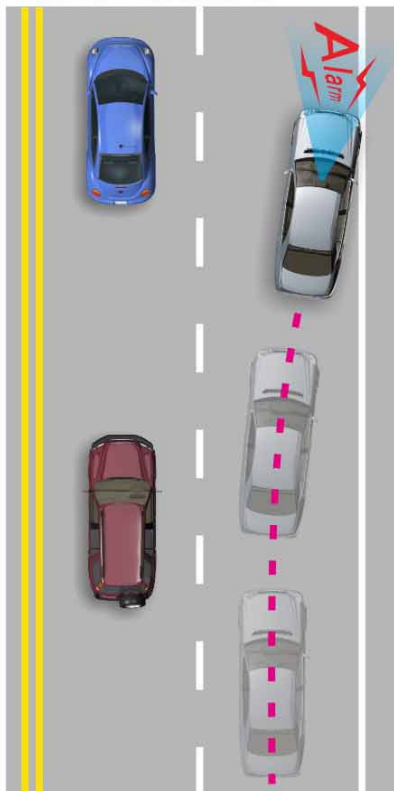
## Function

- **Front collision warning system (FCW) :**  
The driver who does not maintain an appropriate safe distance with the front vehicle, when the collision risk occurred, the blue warning light and warning sound issue from the device at the same time.
- **Lane departure warning system (LDW) :**  
When the driver does not turn left and right signal on (or has a wrong turn) to across the lane line, the blue warning light and warning sound both appears from the device.
- **Pedestrian detection warning system (PDW) :**  
Pedestrian detection warning is an aid to assist the driver when there is a risk of colliding with a pedestrian in front that are stationary or moving in the same direction as your vehicle.

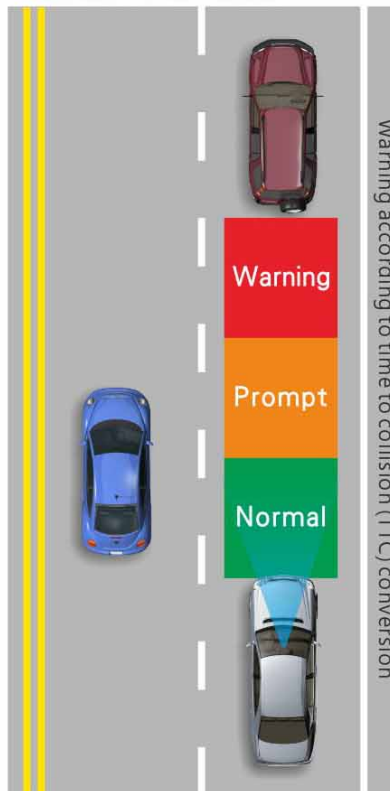
## Features

- The module integrated with camera / ECU / status LED indicator switch / speaker in one unit.
- Once the system is in normal operation, the status LED indicator is constantly blue.
- The status indicator shows constantly yellow , means the system is in exception and cannot work normally.

### Lane departure warning system (LDW) Function Illustration



### Front collision warning system (FCW) Function Illustration



Warning according to time to collision (TTC) conversion

### Pedestrian detection warning system (PDW) Function Illustration

